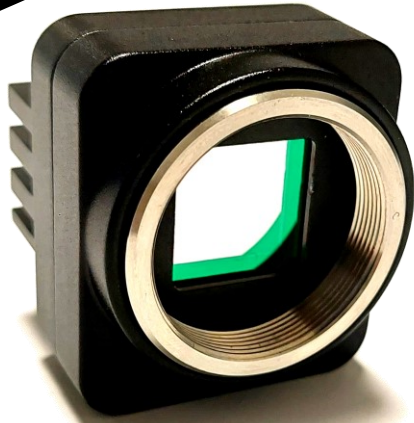
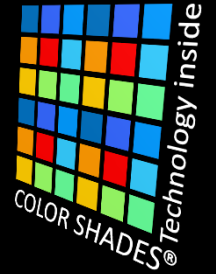


# CICADA Camera (1.3MP)

Snapshot Multispectral Camera  
for the SWIR range 1100-1600nm

SILIOS Technologies' CICADA Sensor and Camera are based on the *COLOR-SHADES*® pixelated filter technology.

This snapshot multispectral camera captures 9 spectral sub-images over the 1100-1600nm SWIR spectral range.



Snapshot Multispectral Camera  
1100-1600nm Spectral Range  
9 Spectral Bands  
5 microns Pitch  
1.3MP raw Spatial Resolution  
USB 3.0



LARGE SPATIAL RESOLUTION  
SNAPSHOT MULTISPECTRAL  
CAMERA FOR YOUR  
SWIR APPLICATIONS



SILIOS Technologies  
ZI Peynier-Rousset  
Rue Gaston Imbert prolongée  
13790 Peynier (France)

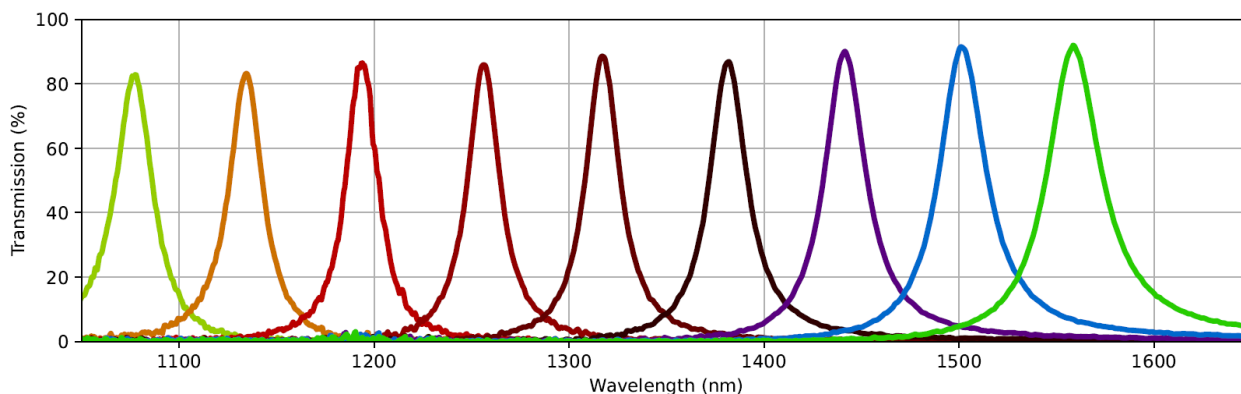
Tel : +33 (0)4 42 53 89 60  
Fax : +33 (0)4 42 53 89 59  
Email : [contact@silios.fr](mailto:contact@silios.fr)  
[www.silios.com](http://www.silios.com)

# CICADA Camera (1.3MP)

Snapshot Multispectral Camera  
for the SWIR range 1100-1600nm



	FEATURES
Wavelength range (nm)	1100-1600 nm
Number of Bands	9
Bandwidth (FWHM)	30 nm (average)
Imager Type	InGaAs
Pixel Pitch	5 $\mu$ m
Lens Mount	CS-mount / C-mount with supplied adaptation ring
Resolution (raw pictures)	1296x1032
Resolution (spectral pictures)	436x334
Frame Rate	Camera : 68 FPS (12 bits) / COLOR SHADES Lab : 68 FPS (12 bits)
Exposure time range	33 $\mu$ s to 10 s
ADC	12 bits
Interface (data & power supply)	USB3.0
Dimensions	34 x 38 x 35 mm <sup>3</sup>
Weight	70 gr



CICADA Filter Transmission



SILIOS Technologies  
ZI Peynier-Rousset  
Rue Gaston Imbert prolongée  
13790 Peynier (France)

Tel : +33 (0)4 42 53 89 60  
Fax : +33 (0)4 42 53 89 59  
Email : contact@silios.fr  
www.silios.com